

Information Request Form

Name _____ Title _____

Company (if applicable) _____

Address _____

Phone _____

Email _____

- Please send application form
- Please send information packet
- Please call me

Questions or Comments:

Send completed form to:

CESSWI, Inc.
49 State Street
Marion, NC 28752

Phone: (828) 655-1600
Fax: (828) 655-1622
Web: www.cesswi.org
Email: info@cesswi.org

A Unique Program

CESSWI Registrants must understand the minimum requirements for the US EPA National Pollutant Discharge Elimination System (NPDES) storm water permit program and/or Canada's Department of Fisheries and Oceans Requirements.

Registrants must demonstrate proficiencies in Site Safety, Communication, Documentation, Inspector Duties, and Plan Management. Additionally, registrants must possess a full understanding of the following aspects of Best Management Practices (BMPs): Purpose, Objective, Targeted Pollutants, Applications, Limitations, Implementation Considerations, Inspection Criteria, and Maintenance.



Certified Erosion Sediment and Storm Water Inspector Certification Program

■ The Certified Erosion, Sediment and Storm Water Inspector™ Certification Program (**CESSWI™**) was created by EnviroCert International, Inc. (*formerly CPESC, Inc.*) in conjunction with an international oversight committee of erosion and sediment control, and storm water management professionals.

Who Can Apply?

The program is available to all qualified technicians and inspectors who wish to demonstrate their proficiencies in construction and post-construction inspection skills.

Candidate Qualifications

Candidates must have at least three years of directly related experience and possess a high school diploma (or equivalent) along with work references. Individuals having at least one year of directly related experience AND at least 16 hours of related training may qualify for In-Training status.

How To Apply

Applications may be downloaded from www.cesswi.org or obtained by contacting:

CESSWI, Inc.
49 State Street
Marion, NC 28752-4020
828.655.1600 phone
828.655.1622 fax
info@cesswi.org email

Candidates must submit their application along with a required fee. Following application review and approval, they must complete a written examination to demonstrate their knowledge of the basic inspection skills for erosion, sediment and storm water related construction projects.



Detailed Information

Detailed information about program requirements and procedures can be found at the CESSWI program web site: www.cesswi.org

Mission Statement

The mission of the Certified Erosion, Sediment, and Storm Water Inspector (CESSWI) Program is to serve the public trust through the certification of individuals who are technically and ethically qualified to provide nationally consistent inspections of erosion, sediment, and storm water management practices for compliance with an approved site plan/Storm Water Pollution Prevention Plan (SWPPP) including compliance with applicable (local, state, provincial and federal) laws and regulations.

Additional Provisions

Registrants must subscribe to a Code of Ethics, pay an annual renewal fee and provide proof of continuing education credits.

A New Industry Standard

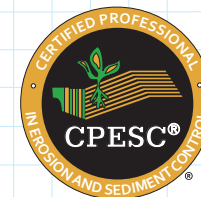
CESSWIs are being recognized throughout the United States and Canada as individuals who have demonstrated the minimum proficiencies needed to inspect construction and post-construction Management Practices. Specific state requirements may be added to the certification process.



EnviroCert International, Inc.

EnviroCert International, Inc. is recognized internationally as a certification body for professionals in the erosion and sediment control, and storm water quality industries. With over 25 years of certification experience, EnviroCert International, Inc. takes pride in offering the CESSWI program.

Other EnviroCert International, Inc. certification programs include the Certified Professional in Erosion and Sediment Control™ (CPESC®) and the Certified Professional in Storm Water Quality™ (CPSWQ®).



www.cpesc.org



www.cpswq.org